



F2062

F2027

F2045

F2078

F2023

F2028

F2048

F2079

F2026

F2044

F2054

Item numbers may also end in BB.

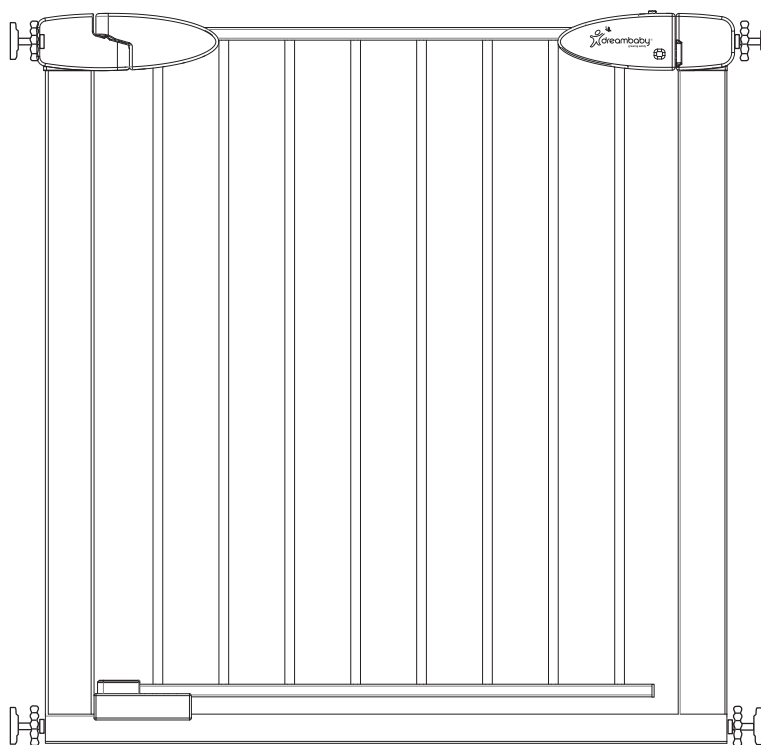
PATENTED

INSTRUCTIONS:

Boston

**IMPORTANT! READ AND FOLLOW THESE INSTRUCTIONS CAREFULLY
AND KEEP FOR FUTURE REFERENCE.**

Read the entire Instruction before assembling and installing this product.
If you sell or give away this product, make sure you give this Instruction to the new owner.



Conforms to: EN1930:2011

WARNING

WARNING - Read the instructions before installation as incorrect installation can be dangerous.

WARNING - Do not use the safety barrier if any components are damaged or missing.

WARNING - The safety barrier must not be fitted across windows.

WARNING - **Never use without wall cups.**

Screws **MUST** always be used to install wall cups.

This safety barrier is for domestic use only.

This safety barrier is suitable for use with children up to 24 months of age.

Not every child is the same. If your child of less than 24 months is able to pass through, climb over, crawl under or able to open or to dislodge the safety barrier, then the safety barrier can't be used to provide the assumed protection.

Never use with a child able to climb or dislodge/open gate.

The surfaces that the gate is to be fixed to must be suitable for the purpose and must be structurally sound.

If the barrier is to be used at the top of the stairs, it should not be positioned below top level.

If the safety barrier is used at the bottom of the stairs, it should be positioned at the front of the lowest tread possible.

This gate has a manual close system.

This gate is intended for indoor use and is not to be exposed to outdoor elements.

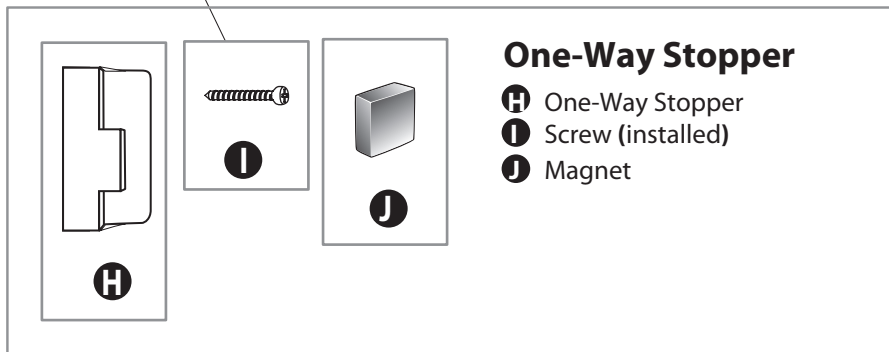
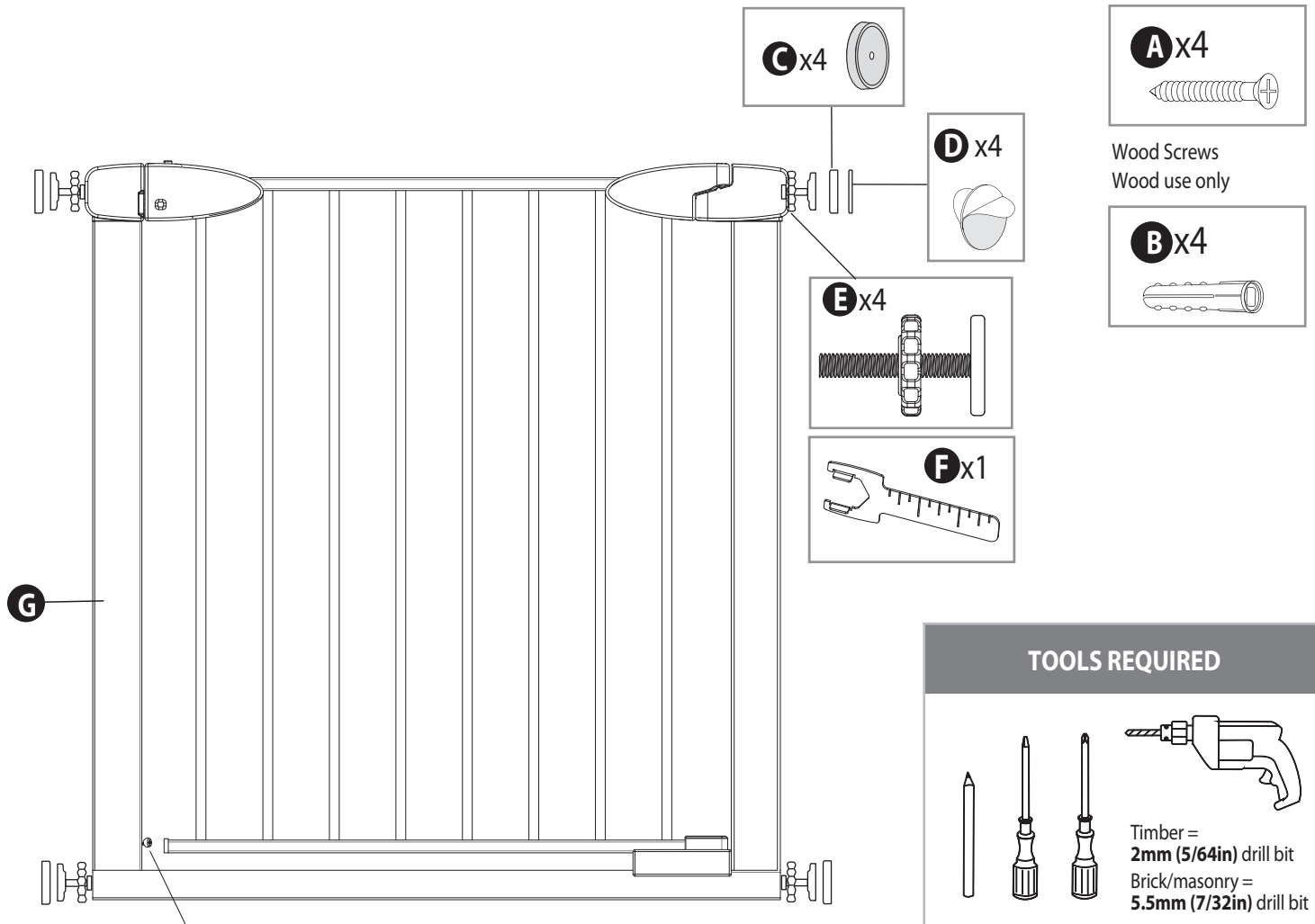
Install this gate away from heaters and other sources of heat.

This product does not replace proper adult supervision and will not necessarily prevent all accidents.

CAUTION:

With any pressure mounted gate, a construction bar is required across the base. Note, this bar can be a tripping hazard. If you choose to position a pressure mounted gate at the top of stairs, use extra caution to step over this bar to prevent trips and falls.

PARTS LIST



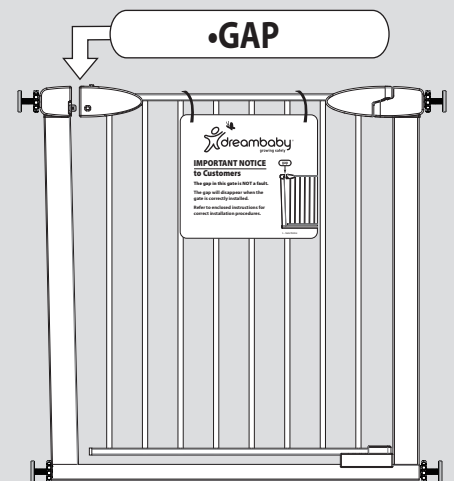
! WARNING:

This package contains small parts and sharp points in an unassembled state.
Keep out of reach of children.
Adult assembly required.

NOTICE TO CUSTOMERS

THE GAP IN THIS GATE IS NOT A FAULT.

The gap will disappear when the gate is correctly installed.



INSTALLATION

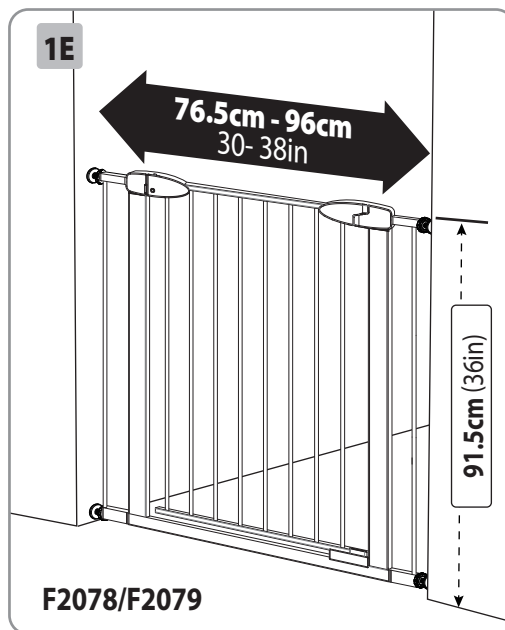
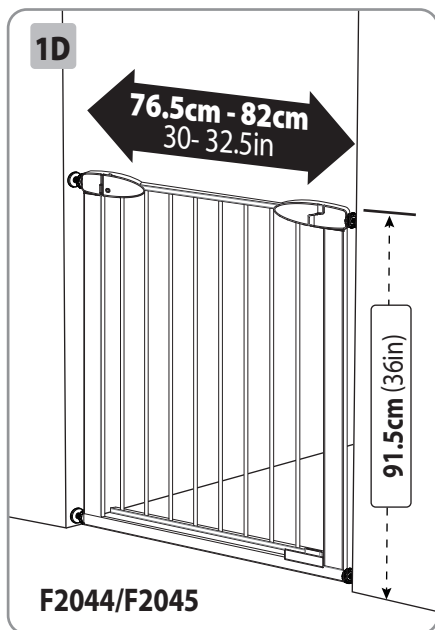
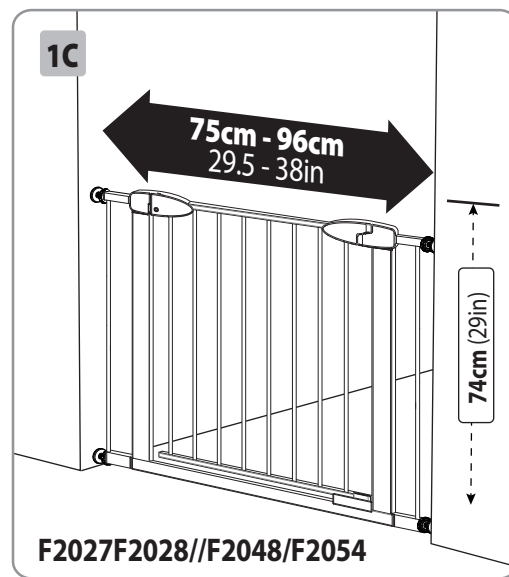
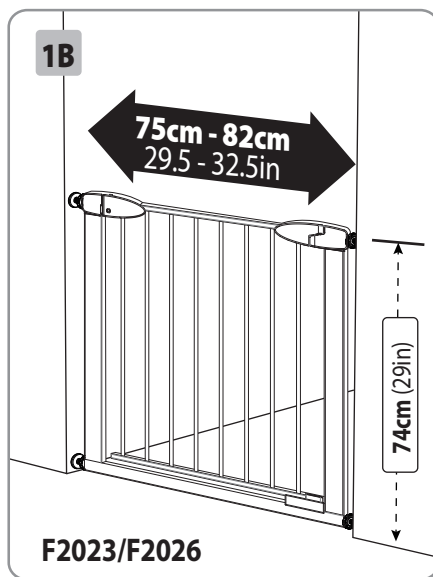
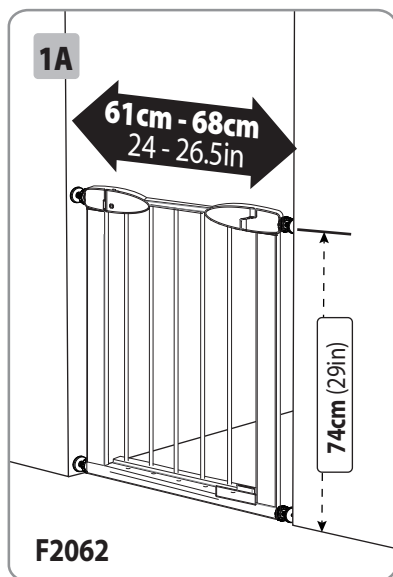
1. Measure the width of the opening of where you intend to install the gate.

For wider openings select the appropriate Gate Extension(s), sold separately.



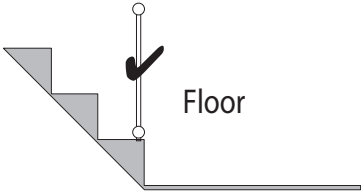
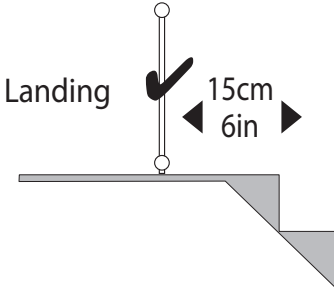


Ensure the surface you mount the gate is structurally sound such as solid timber, brick or masonry. For plaster / gyprock surface, locate the timber beam or stud behind and mount in this location (mounting on plaster / gyprock alone is not strong enough and not safe).

DO NOT MOUNT TO GLASS.

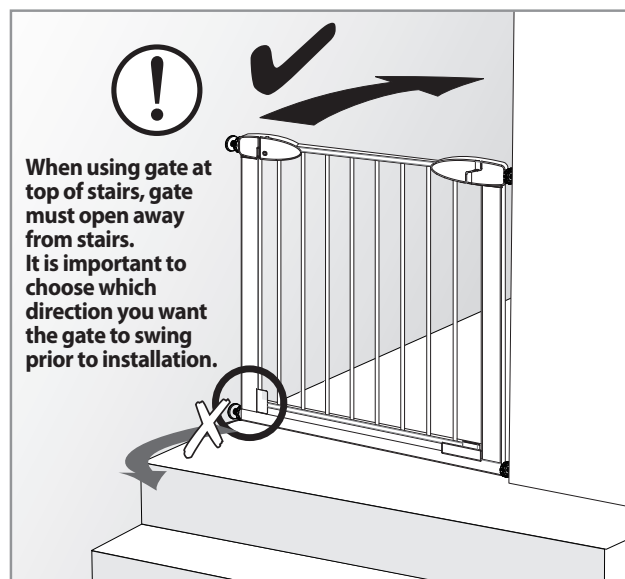
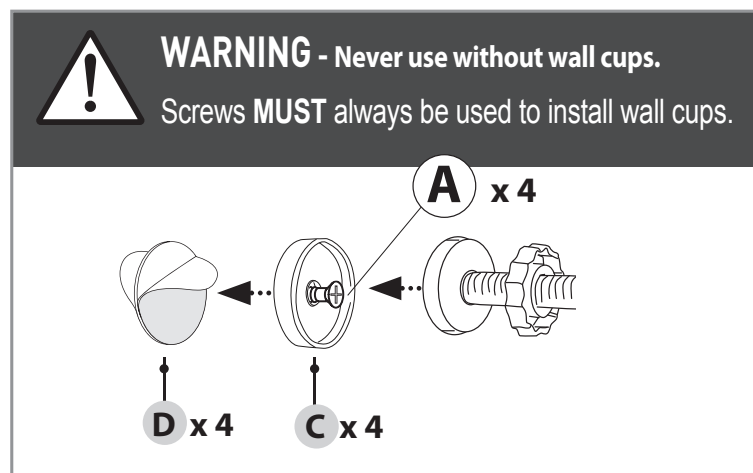


For use on stairs.

 Bottom of stairs	 Top of stairs
 <p>Floor</p> <p>If the safety barrier is used at the bottom of the stairs, it should be positioned at the front of the lowest tread possible.</p>	 <p>Landing</p> <p>15cm 6in</p> <p>If the safety barrier is used at the top of stairs, it should not be positioned below the top level. At the top of landing, position the gate 15cm (6in) away from the top step.</p>

CAUTION: With any pressure mounted gate, a construction bar is required across the base.

Note, this bar can be a tripping hazard. If you choose to position a pressure mounted gate at the top of stairs, use extra caution to step over this bar to prevent trips and falls.

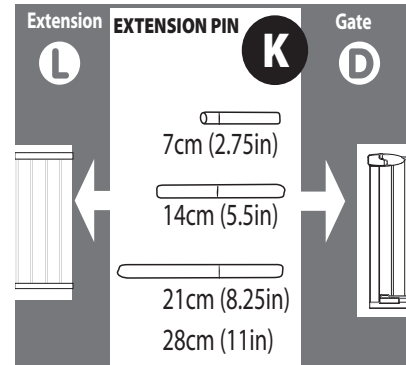
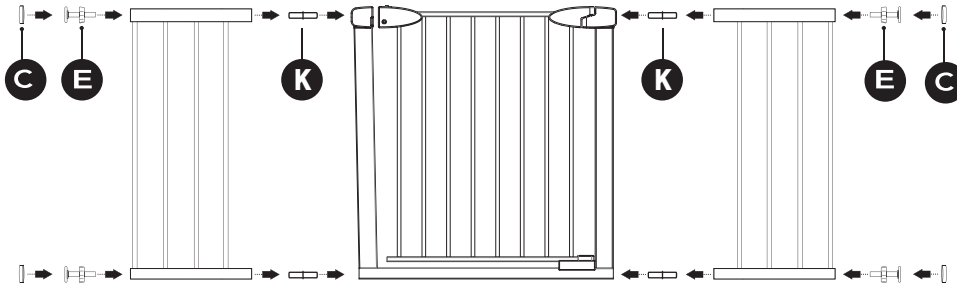


ADDING EXTENSION FRAMES

2. To use with Gate Extensions (sold separately).

2A

- Insert Extension pins (**K**) into the holes on the outside of the Gate Frame.
- Next, slip Extension Frames over the Pins.
- Finally, slide in the Tension Knobs and Bolts with Rubber Pads (**E**).



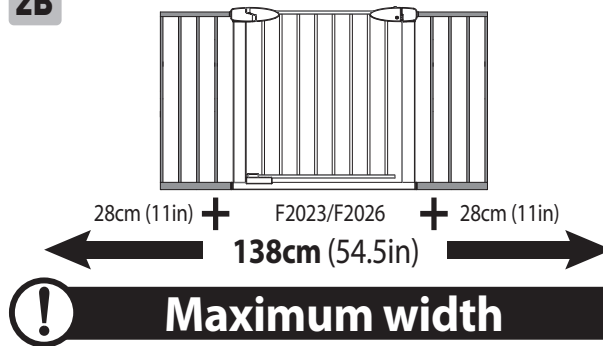
Examples are shown below Gate Extensions (sold separately)

F2032 / F2033 / F2090 - 7cm (2.75in)
 F2034 / F2035 / F2091 - 14cm (5.5in)
 F2036 / F2037 / F2092 - 21cm (8.25in)
 F2038 / F2039 / F2093 - 28cm (11in)

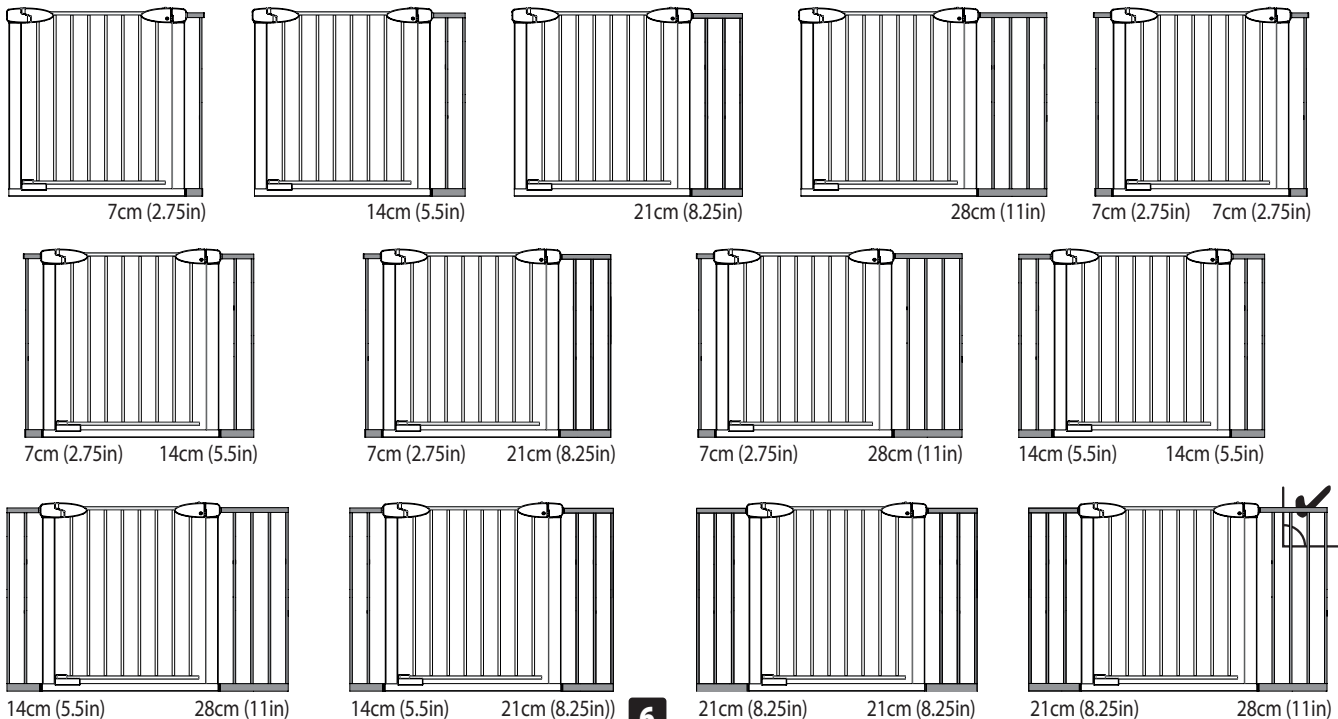
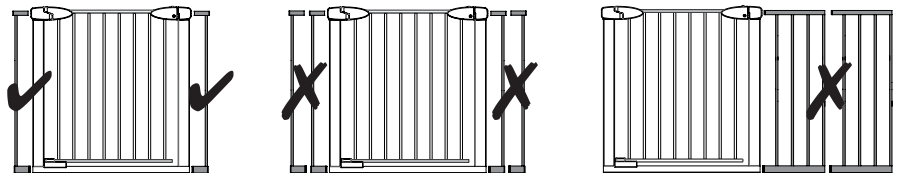
XTRA-TALL

F2082 / F2083 - 7cm (2.75in)
 F2084 / F2085 - 14cm (5.5in)
 F2086 / F2087 - 21cm (8.25in)
 F2088 / F2089 - 28cm (11in)

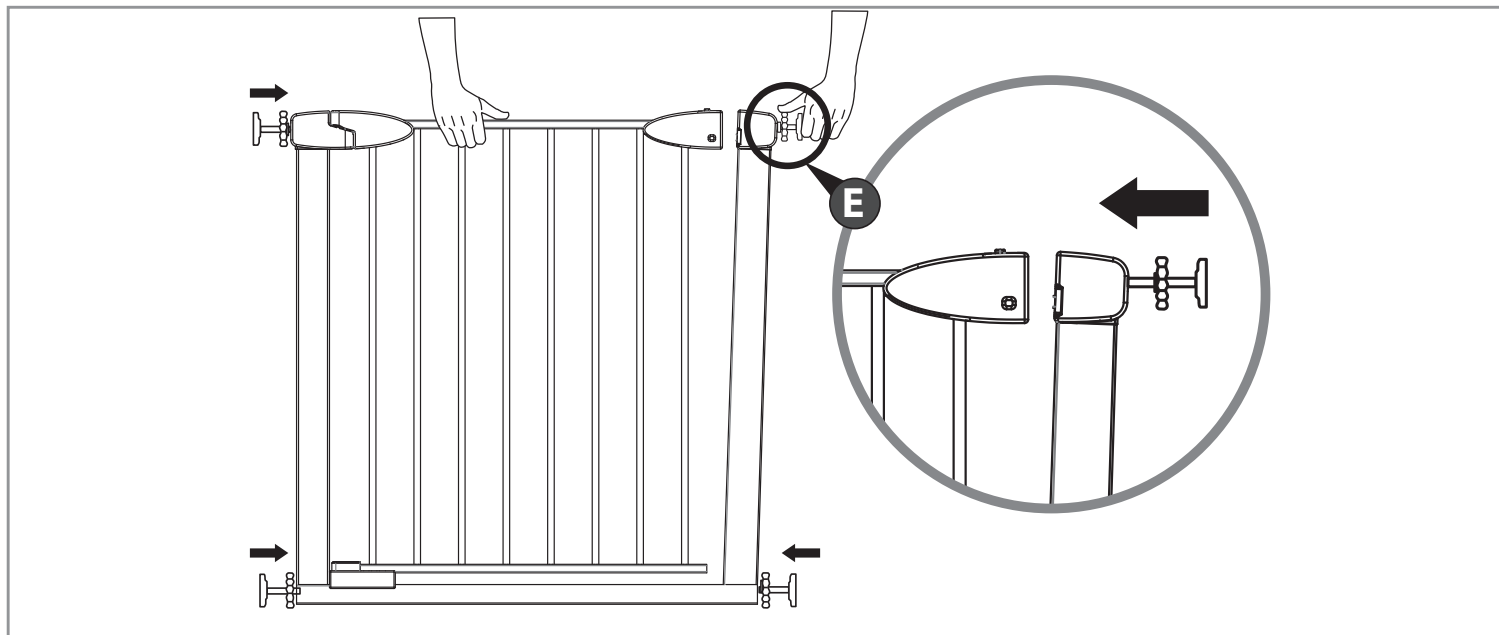
2B



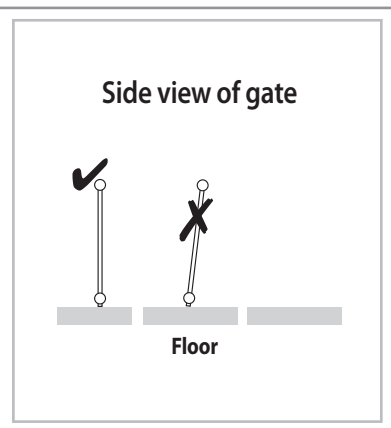
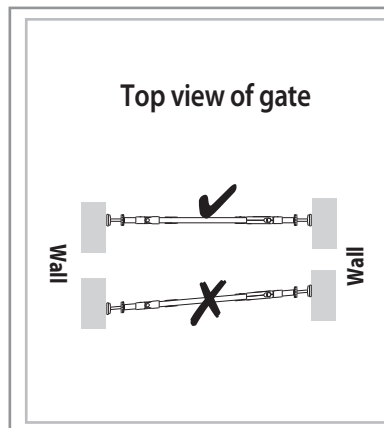
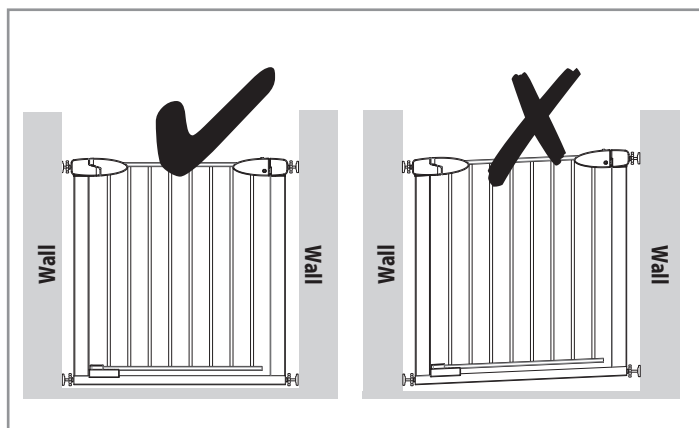
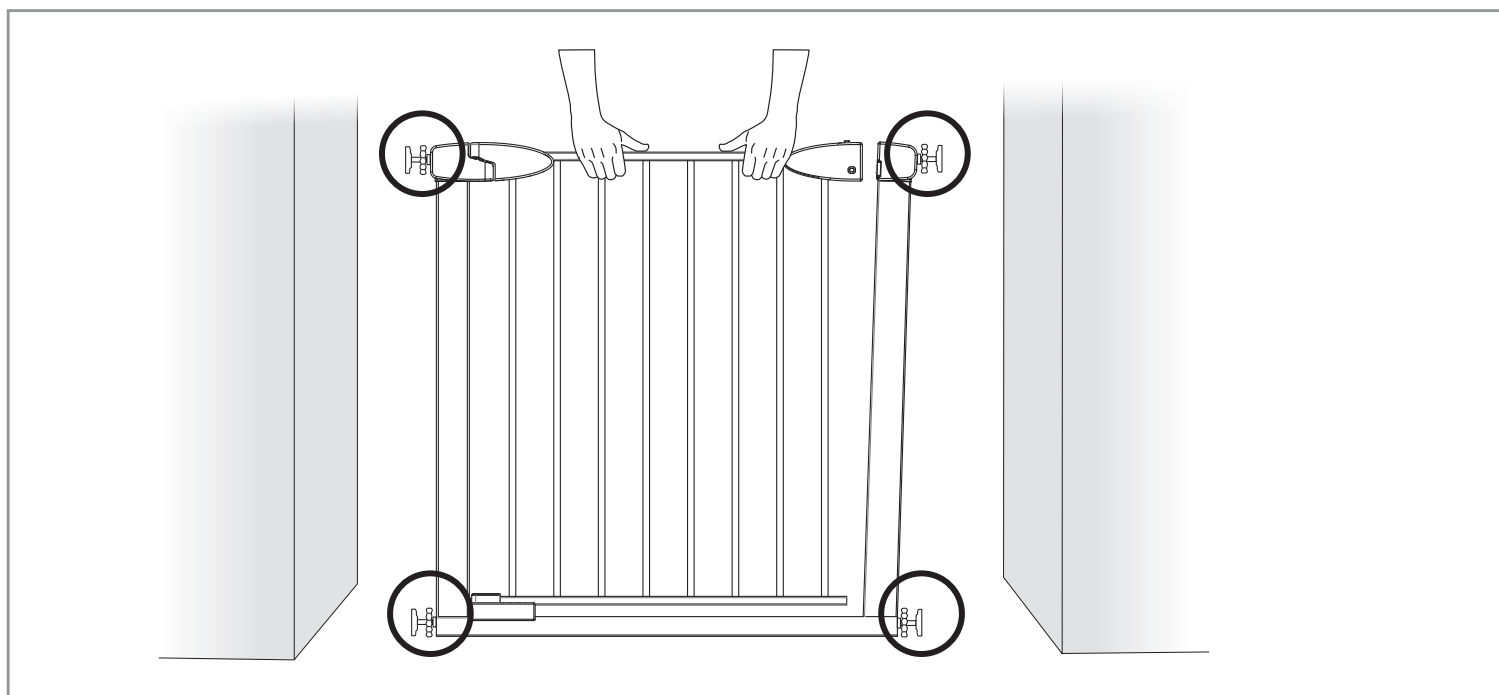
!
 A maximum of 2 Gate Extensions
 can be used,
 1 on each side of gate.
 Do NOT install 2 Gate Extensions
 on the same side of gate.



3. Insert the Bolts with Rubber Pads and Tension Knobs into the Gate Frame.



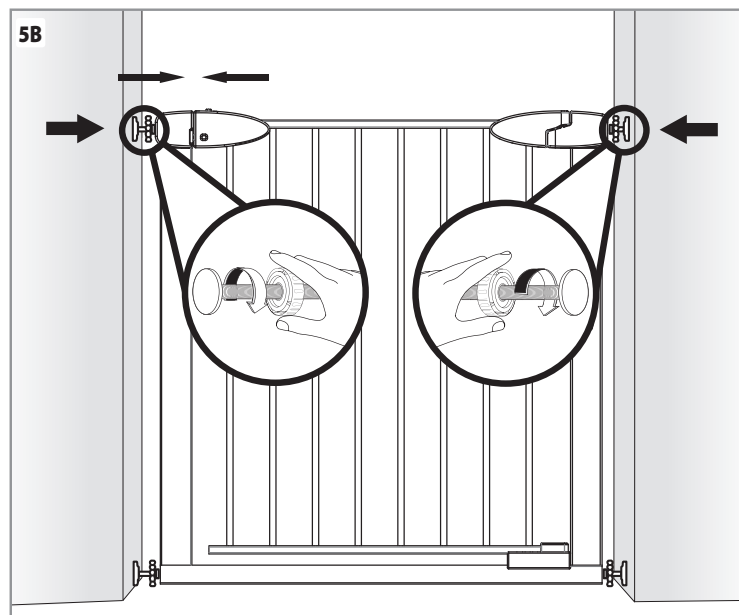
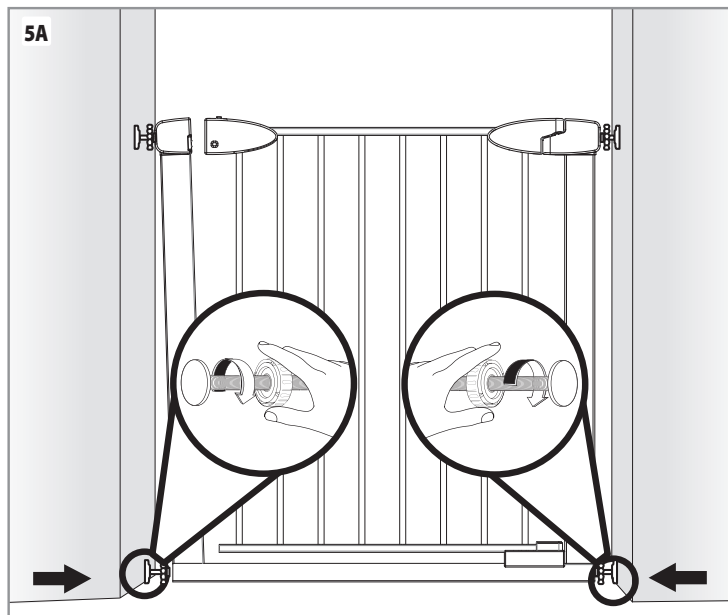
4. Place the gate in the opening so that the bottom of the Gate Frame is completely flat on the floor, and it is perpendicular to the opening and the floor.



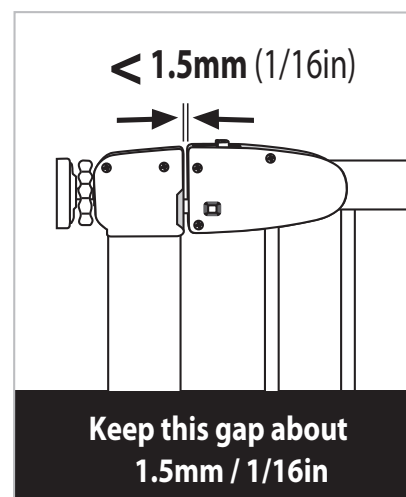
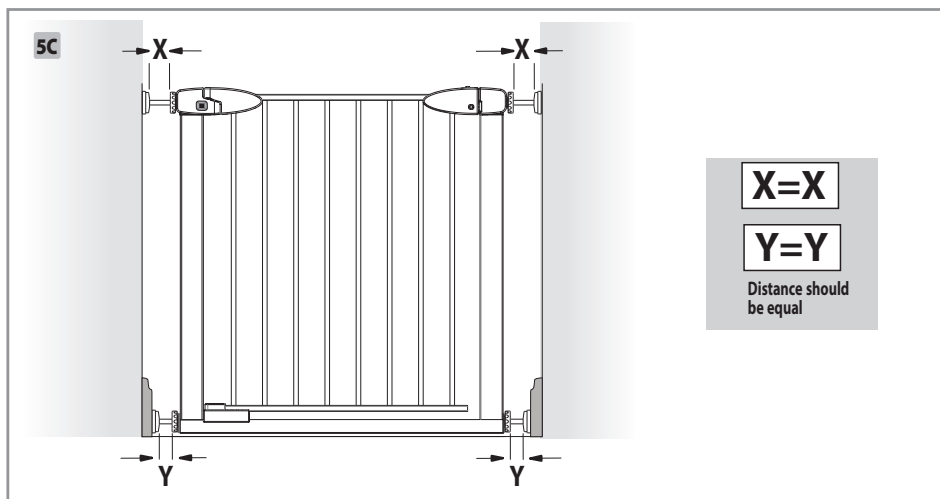
5. Tighten both of the lower Tension Knobs (E) by turning them at the same time.

NOTE: Make sure the bottom of the gate frame remains completely flat on the floor.

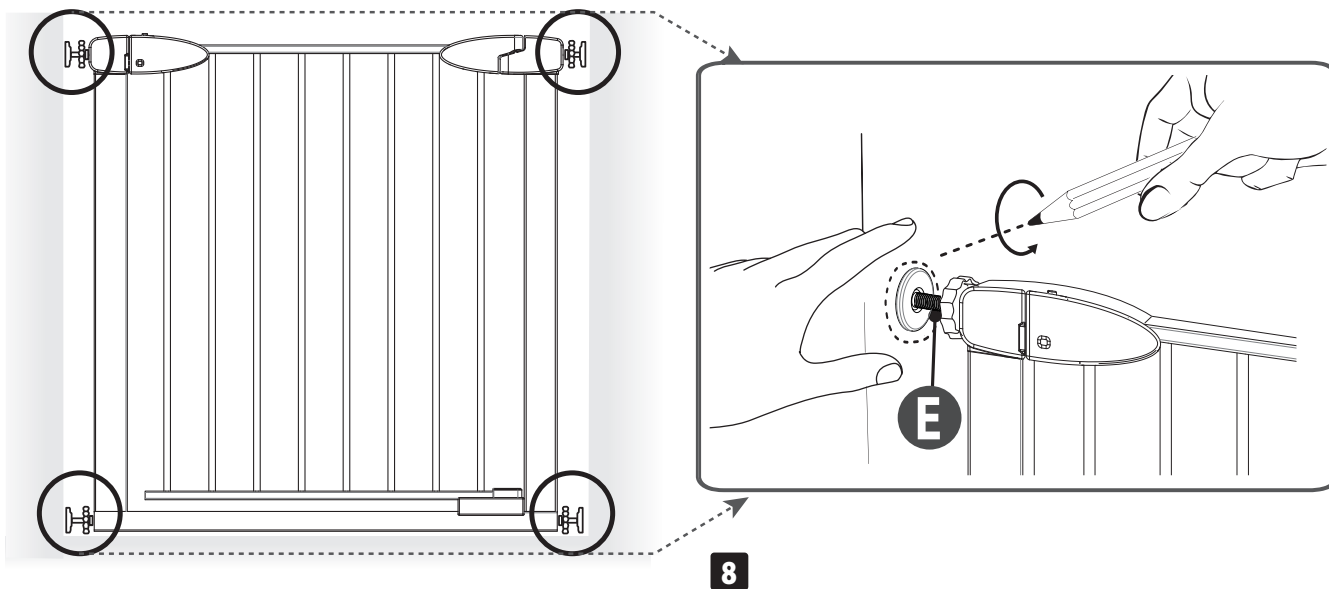
Next, tighten both of the upper Tension Knobs (E) by turning them at the same time.



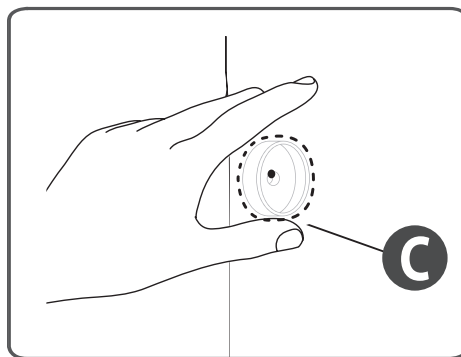
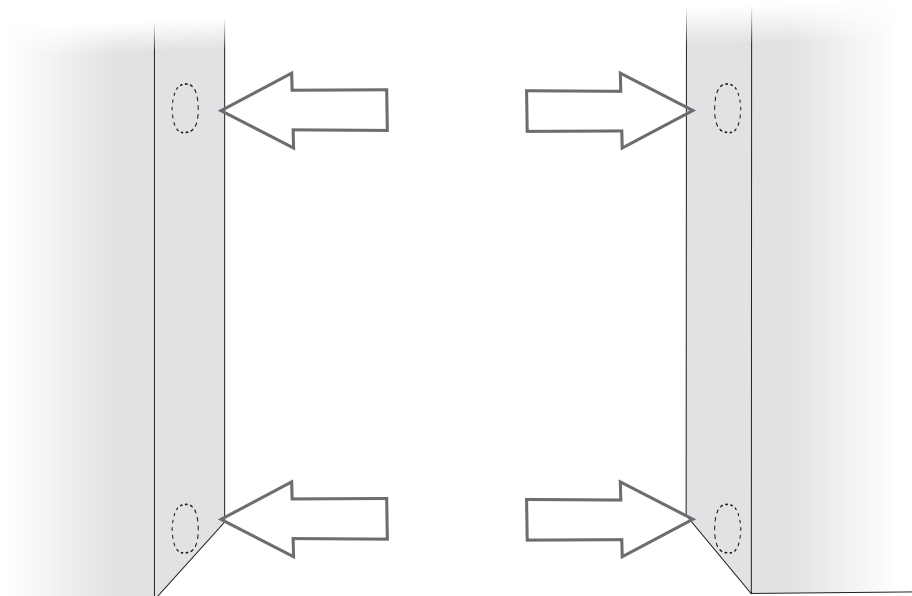
When correctly tightened, the distances between Tension Knobs and Rubber Pads should be equal.



6. Use a pencil to mark around the end of Bolts with Rubber Pads.



7. Loosen the Tension Knobs and remove gate.
Line up Wall cups with marks on wall.



8. Fasten the Wall Cups to the wall with double sided tape and screws.

NOTE: Ensure that they are aligned vertically, so that the Wall Cups at the top are directly above the ones at the bottom.

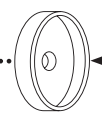


WARNING - Never use without wall cups.

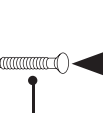
Screws **MUST** always be used to install wall cups.



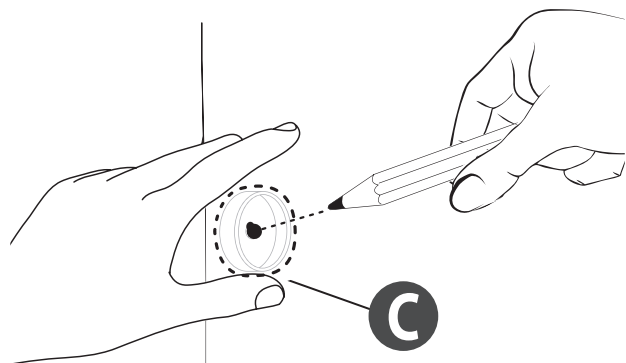
D x 4



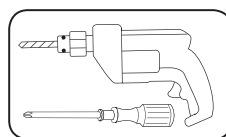
C x 4



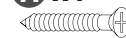
A x 4



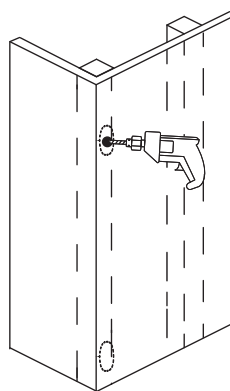
A x 4



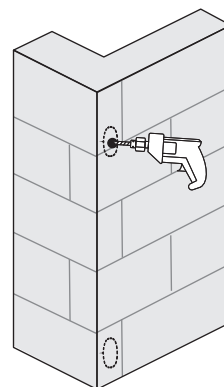
A x 4



B x 4



Timber = **2mm**
(5/64in) drill bit

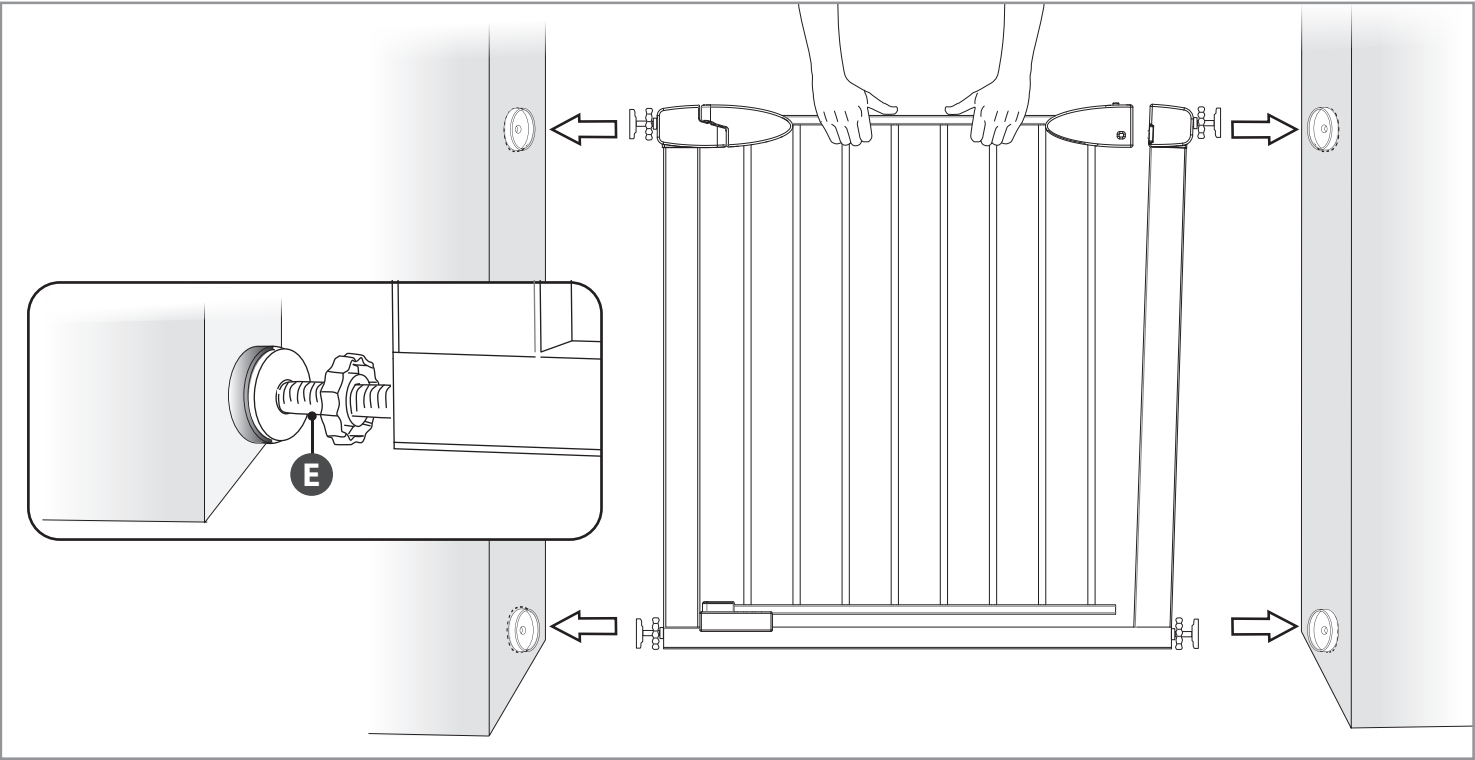


Brick/masonry = **5.5mm**
(7/32in) drill bit

Wood screws **(A)** included.

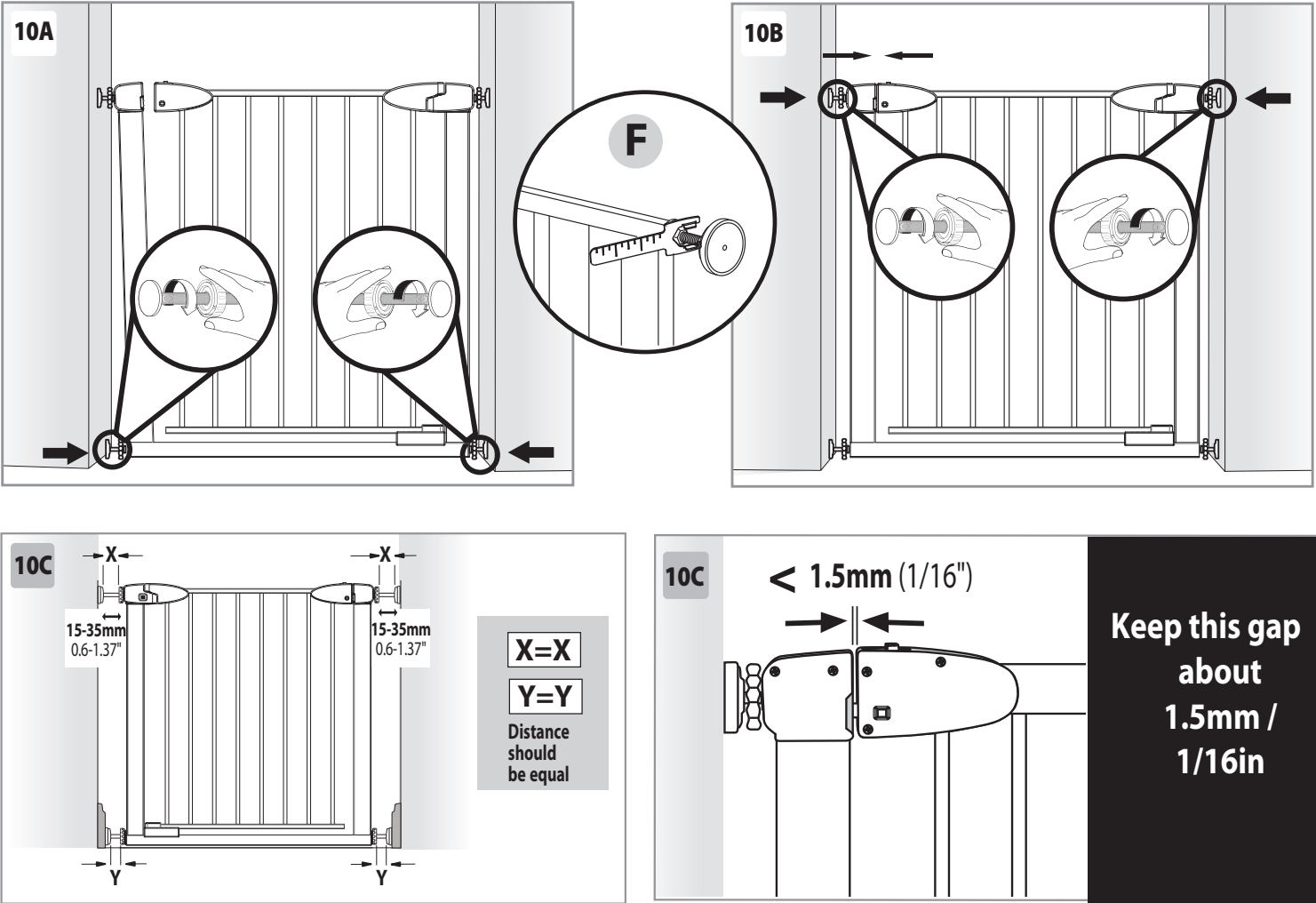
For Brick or Masonry use the appropriate fittings, screws and plugs for your wall (not included)

9. Reinstall gate inserting bolts with rubber pads into Wall Cups (C).



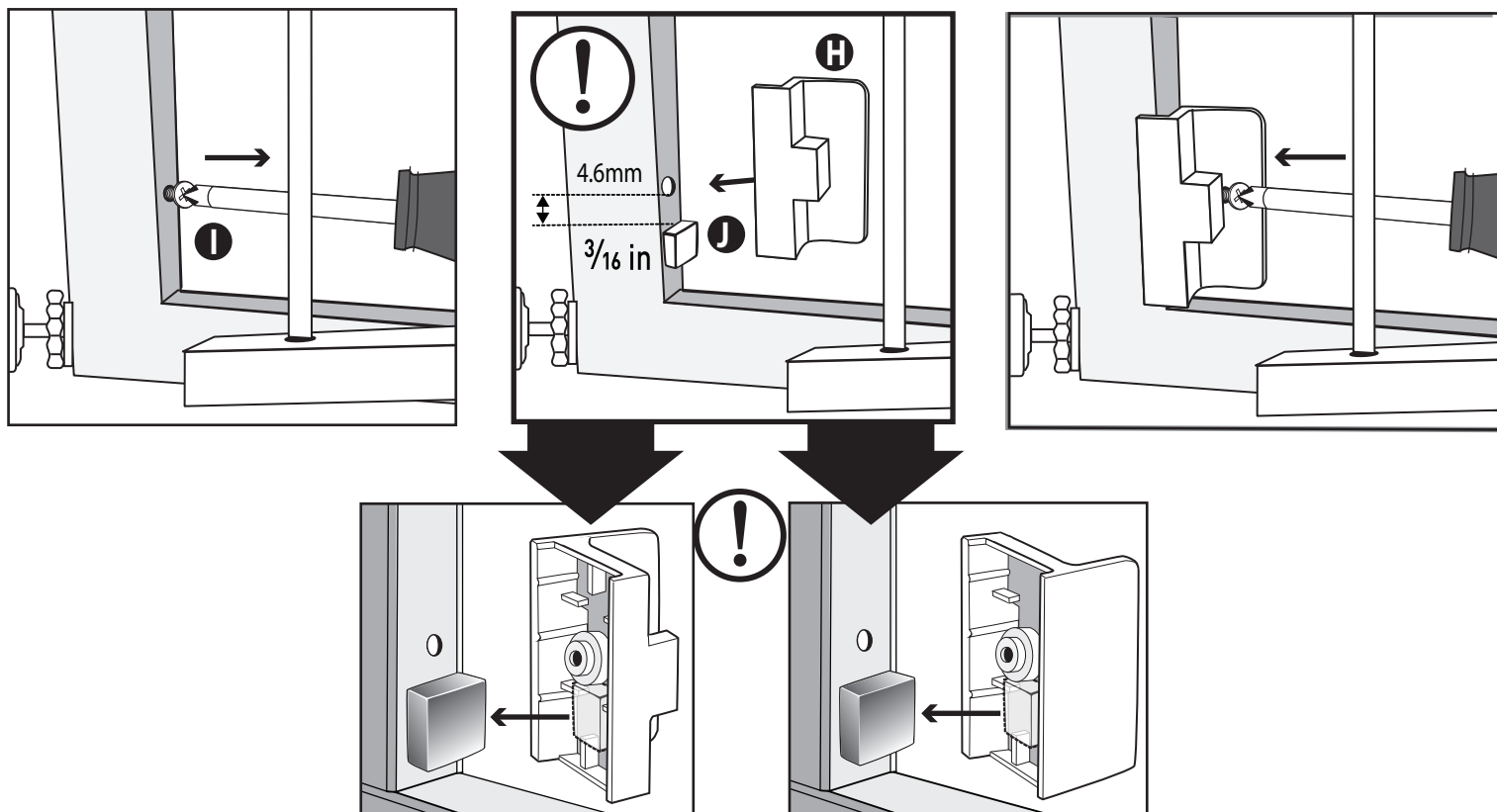
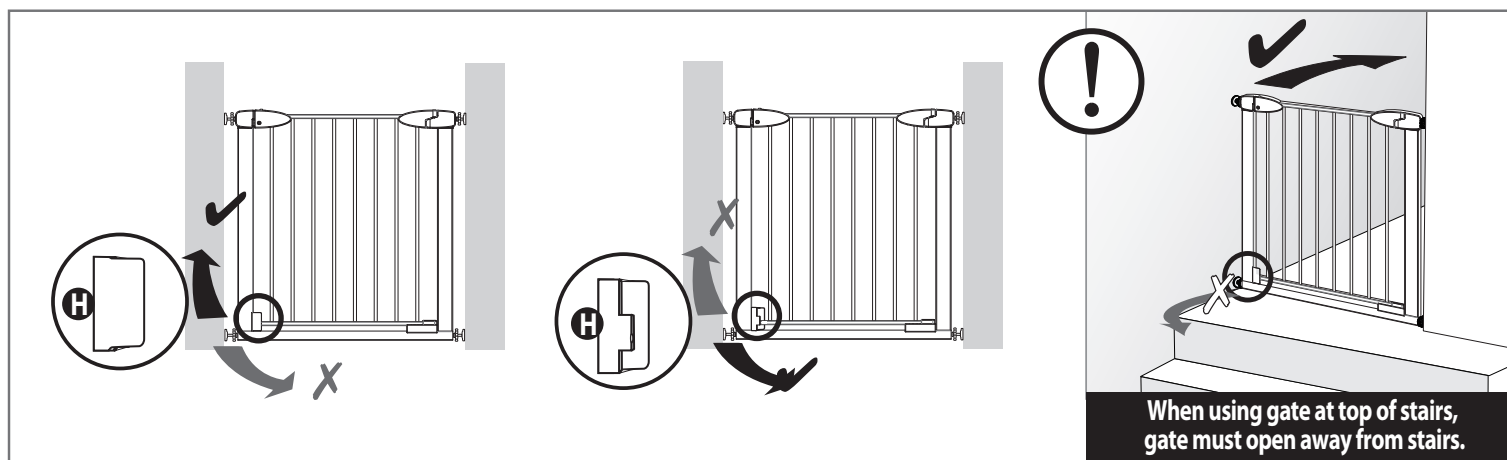
10 Tighten both of the lower Tension Knobs by turning them at the same time.

NOTE: make sure that the bottom of the Gate Frame remains completely flat on the floor. Ensure gate is securely fastened at both top and bottom.

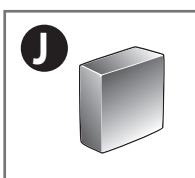


ONE-WAY STOPPER

It is important to choose which direction you want the gate to swing prior to installation.



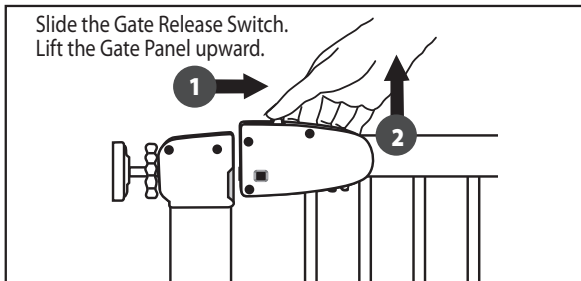
⚠ Keep out of reach of children



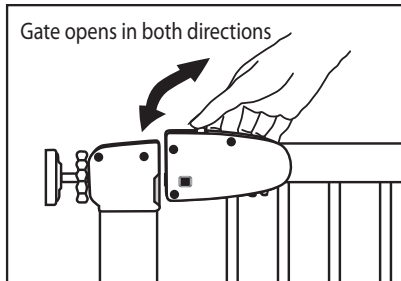
OPERATION

1. To open the gate:

Slide the Gate Release Switch.
Lift the Gate Panel upward.



Gate opens in both directions

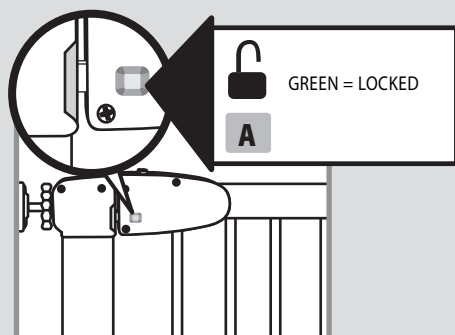


2. To close the gate:

This gate has manual close system. Push gate closed until it locks securely.

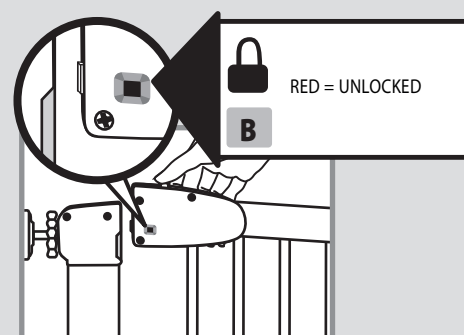
LOCK INDICATOR

Ensure that gate is locked securely, each time when closing the Gate Panel. The gate is closed when you hear the 'click sound'.



A = GREEN mark appears when the gate panel closed properly (A).

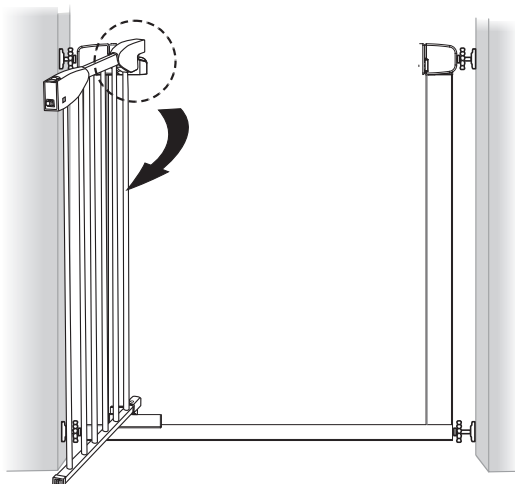
B = RED mark appears when the gate panel is opened or not closed properly (B).



SMART STAY-OPEN SYSTEM

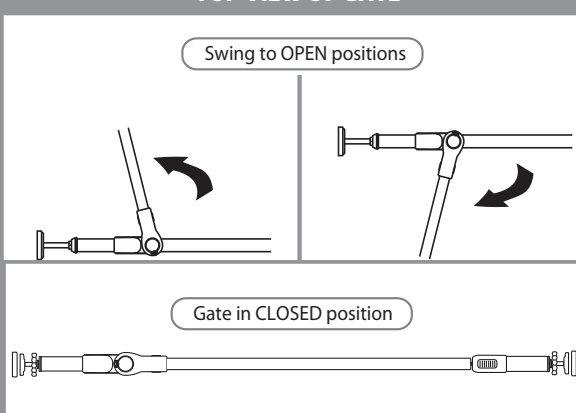
To engage the Smart Stay Open System swing gate in chosen direction to its maximum opening. Gate will stay open. Close as required.

CAUTION: Keep gate closed when children are present.



•TOP VIEW OF GATE

Swing to OPEN positions



MAINTENANCE & CARE

- Gate must be fitted according to instructions, to ensure it works correctly.
- Regularly check tension knobs and rubber pads to make sure the gate is securely in place. Adjust as required.
- Any additional and replacement parts should be obtained from **Tee-Zed** Products.
- To clean, wipe surface with a damp cloth or sponge using mild detergent and warm water. Never clean with abrasive, ammonia based bleach based or spirit type cleaners.

Tee-Zed acknowledges that its customers may be entitled to statutory consumer guarantees and does not seek to exclude or limit them. These guarantees include that Tee-Zed's products are of acceptable quality. This Tee-Zed product is for the specific purpose detailed in the instructions and packaging and Tee-Zed considers use outside of that purpose to be abnormal use. To the maximum extent permitted by law, Tee-Zed does not accept any liability for damage:

- arising from abnormal use of the products;
- caused by installation or removal of the products other than in accordance with the supplied installation and removal instructions; or
- arising under the law of tort or contract.

Dreambaby® products by **Tee-Zed**

Tee-Zed Products Pty Ltd
PO Box 2022,
Bondi Junction NSW 1355
Australia
☎ +61 (0)2 9386 4000
✉ info@tee-zed.com.au
www.dreambaby.com.au

Tee-Zed Products (N.Z.) Ltd
PO Box 64013,
Botany Town Centre Auckland
New Zealand
☎ +64 (0)9 274 8788
✉ info@tee-zed.co.nz
www.dreambaby.co.nz

Tee-Zed Products Ltd
PO Box 29227,
Dunfermline, KY12 2DN
United Kingdom
☎ +44 (0)844 800 9445
✉ info@tee-zed.co.uk
www.dreambaby.co.uk

